

() , ()

*

(/ / : / / :)

(IRC99-01 CP57-614 CP48-103)

/

)

(IRC99-01 CP57-614 CP48-103)

(

()

()

()

()

IRC99-01

CP48-103 CP57-614

.(Cosgrove and Rijsberman, 2000)

.(Cosgrove and Rijsberman, 2000)

, ()

(

(2004) Choudhary et al.

()

()

/

...

/ - / /

(1966) Bernstein et al.

...

NCO293

/

(1984) Nour et al.

/ /

/)

/ / (

/

(1981) Thomas et al.

NCO-310

()

() ()

(1965) Shoji and Sond

CP44-101 NCO310

/

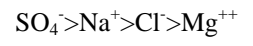
/

)

Joshi

(1980) and Naik

Co-740



Lingle et al.

(2000)

TCP 87-3388 NCO-310

/ / / /

NCO-310

/

/ /

(2008) Wiedenfeld

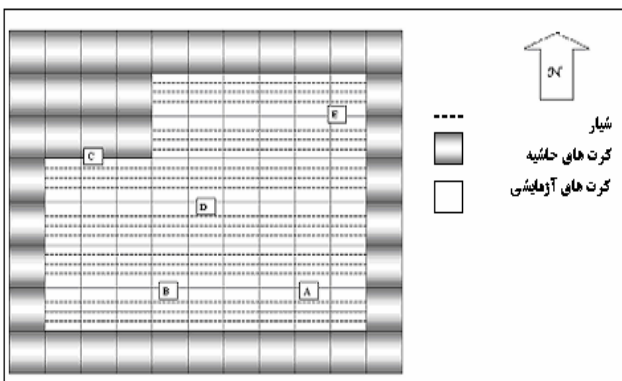
()

/ /

(())
(W)

/ /
/

()



()

, ()

()

(mm)	(m/s)	(mm)	(%)	(°C)	(°C)	(°C)	(°C)	(°C)
/	/	/	/	/	/	/	/	/
/	/	/	/	/	/	/	/	/
/	/	/	/	/	/	/	/	/
/	/	/	/	/	/	/	/	/
/	/	/	/	/	/	/	/	/
/	/	/	/	/	/	/	/	/
/	/	/	/	/	/	/	/	/
/	/	/	/	/	/	/	/	/
/	/	/	/	/	/	/	/	/
/	/	/	/	/	/	/	/	/
/	/	/	/	/	/	/	/	/
/	/	/	/	/	/	/	/	/
/	/	/	/	/	/	/	/	/
/	/	/	/	/	/	/	/	/
/	/	/	/	/	/	/	/	/
/	/	/	/	/	/	/	/	/
/	/	/	/	/	/	/	/	/
/	/	/	/	/	/	/	/	/
/	/	/	/	/	/	/	/	/

CP57- CP48-103

IRC99-01 614

/

(Alizadeh, 1999)

(Doorenbos and

% ()
Kassam, 1986)

/

()

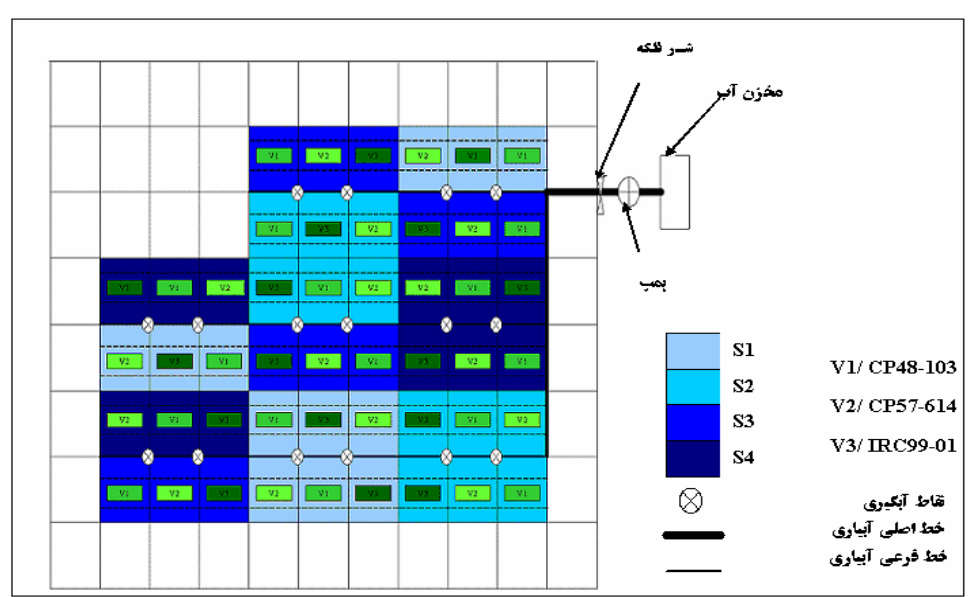
/

)

(

()

()



S₄ / S₃ S₂ () S₁*

(1992) Densay et al. (2000)Yusof et al.

(Baniabbasi and Pourmarashi,

1999)

(Pol)

() (Brix)

%Pol=Saccharimeter Reading × Pol factor ()

()

(Khodadadi, 2006)

$$pty = \frac{Pol}{BRIX} \quad ()$$

(Khodadadi, 2006)

()

Classification n	(meq/l)				(meq/l)				SAR	TDS (mg/l)	pH	EC (dS/m)
	Ca ²⁺	Mg ²⁺	K ⁺	Na ⁺	SO ₄ ²⁻	Cl ⁻	HCO ₃ ⁻	CO ₃ ²⁻				
C ₃ S ₁	/	/	/	/	/	/	/	/	/	/	/	/
C ₃ S ₁	/	/	/	/	/	/	/	/	/	/	/	/
C ₃ S ₁	/	/	/	/	/	/	/	/	/	/	/	/
C ₃ S ₁	/	/	/	/	/	/	/	/	/	/	/	/
C ₃ S ₁	/	/	/	/	/	/	/	/	/	/	/	/
C ₃ S ₁	/	/	/	/	/	/	/	/	/	/	/	/
C ₃ S ₂	/	/	/	/	/	/	/	/	/	/	/	/
C ₃ S ₂	/	/	/	/	/	/	/	/	/	/	/	/
C ₄ S ₁	/	/	/	/	/	/	/	/	/	/	/	/
C ₄ S ₂	/	/	/	/	/	/	/	/	/	/	/	/
C ₄ S ₂	/	/	/	/	/	/	/	/	/	/	/	/
C ₄ S ₂	/	/	/	/	/	/	/	/	/	/	/	/
C ₄ S ₂	/	/	/	/	/	/	/	/	/	/	/	/
C ₄ S ₂	/	/	/	/	/	/	/	/	/	/	/	/

CP48-103

/	/	/	/	/	/	/	/	/	/	/	/	/	/	/	S ₁
/	/	/	/	/	/	/	/	/	/	/	/	/	/	/	S ₂
/	/	/	/	/	/	/	/	/	/	/	/	/	/	/	S ₃
/	/	/	/	/	/	/	/	/	/	/	/	/	/	/	S ₄

()

) ()

(

/ CP48-103

/ / / ()

() ()

/ % /

/ % /

() ()

()

/ /

/

CP57-614

()
()

/	/	/	/	/	/	/	/	/	/	/	/	/	/	/	/	S ₁
/	/	/	/	/	/	/	/	/	/	/	/	/	/	/	/	S ₂
/	/	/	/	/	/	/	/	/	/	/	/	/	/	/	/	S ₃
/	/	/	/	/	/	/	/	/	/	/	/	/	/	/	/	S ₄

CP57-614

()

CP48-103

CP57-

614

/

/

/ CP57-614

/ /

/ /

/

/ /

/ / /

IRC99-01

()
()

/	/	/	/	/	/	/	/	/	/	/	/	/	/	/	/	S ₁
/	/	/	/	/	/	/	/	/	/	/	/	/	/	/	/	S ₂
/	/	/	/	/	/	/	/	/	/	/	/	/	/	/	/	S ₃
/	/	/	/	/	/	/	/	/	/	/	/	/	/	/	/	S ₄

IRC99-01

()

...

:

/	**
/	**
/	**
/	ns
/	ns
/	ns
/	ns
/	**
/	*
/	*
/	*
/	**
/	*
/	ns
/	ns
/	**
/	**
/	**
/	*
/	**
/	ns
/	**
/	**
/	ns
/	*
/	**
/	ns
/	ns
/	ns
/	ns
/	ns
/	*
/	ns
/	*
/	ns
/	ns
/	ns

/

/ /

/ /

/ / /

IRC99-01

/ /

/

/

/

IRC99-01

/ /

()

LSD

()

S₁

S₄

/

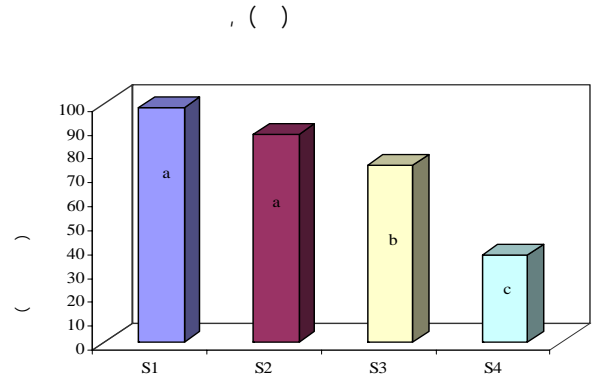
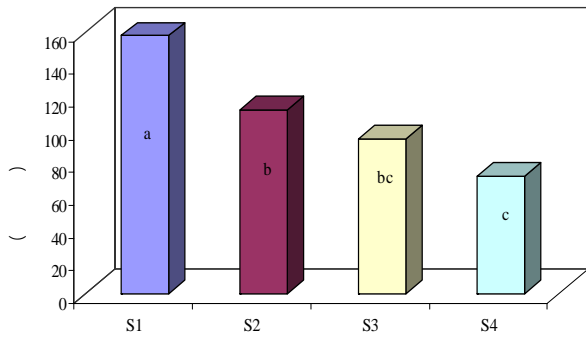
/

/

S₁>S₂>S₃>S₄

ns

** *



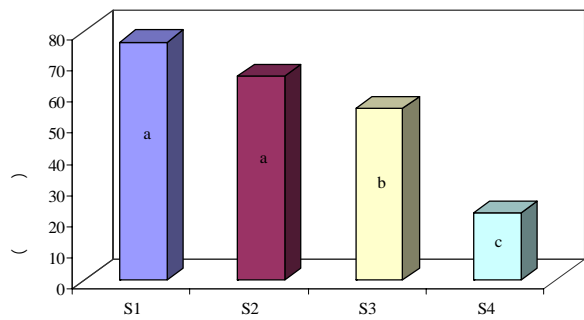
IRC99-01
 CP48-103 CP57-614

V_3 V_2
 V_1

IRC99-01
 CP48- CP57-614
 103

S_1 ()
 S_4 /
 /

$S_1 > S_2 > S_3 > S_4$



CP48-103

()

... :

()

$$V_1 > V_3 > V_2$$

$$S_2 > S_1 > S_3 > S_4$$

$$() \quad V_2 > V_1 > V_3$$

()

$$V_2 > V_3 > V_1$$

CP48-103

IRC99-01 CP57-614

)

(

(CP48-103)

()

CP57-614 IRC99-01

IRC99-01

CP48- CP57-614

103

IRC99-

CP48-103 < CP57-614 < 01

IRC99-

CP48- CP57-614

01

()

CP48-103 CP57-614

103

CP57-614 CP48-103

IRC99-01

CP57- IRC99-01

CP57-614

614

CP48-103

CP48-103 IRC99-01

IRC99-01

REFERENCES

- Alizadeh, A., (1999). *Soil, Water, Plant Relationship*, Emam Reza University (In Farsi).
- Baniabbasi, N. and Pourmarashi, M. (1999). *Sugarcane and its industrial* (In Farsi).
- Bernstein L., Clark R. A., Francois L. E. and Derderian M. D. (1966). Salt tolerance of N. Co varieties sugarcane: II. Effects of soil salinity and sprinkling on chemical composition, *Journal of Agronomy*, 58, 503-507.
- Choudhary O. P., Josan A. S., Bajwa M. S. and Kapur M. L. (2004). Effect of sustained sodic and saline-sodic irrigation and application gypsum and farmyard manure on yield and quality of sugarcane under semi-arid conditions, *Journal of Field Crop Research*, 87, 103-116.
- Cosgrave W. J. and Rijberman F. R. (2000). *World water vision*, W. W. C. Publication, London.
- Densay J. P. S., Luthra R., Senthya H. L. and Dhawan A. K. (1992). Deterioration of juice quality during post harvest storage in some sugarcane cultivars, *India Sugar*, 42 (2), 92-95.
- Doorenbos, J. and Kassam A. H. (1979). Yield response to water, FAO, Irrigation and Drainage, Paper No. 33, p. 193.
- Ginoza H. and Moore P. H. (1985). Screening sugarcane varieties for tolerance to salinity, Report of Hawaiian Sugar Technologists 43, EF5-EF6.
- Joshi G. V. and Naik G. R. (1980). Response of sugarcane to different type of salt stress, *Journal of Plant and Soil*, 56, 255-263.
- Khodadadi, A. (2006). *Study of some effective parameters of the sugarcane growth using the product control method in Ahvaz*. Mc.S thesis, Shahid Chamran University (In Farsi).
- Lingle S. E and Wiegand C. L. (1997). Soil salinity and sugarcane juice quality, *Journal of Field Crop Research*, 54, 259-268.
- Lingle S. E., Wiedenfeld R. P. and Irvine J. E. (2000).

...

:

- Sugarcane response to saline irrigation water, *Journal of Plant Nutrition*, 23 (4), 469-486.
- Nour A. H., Wakeed A. F. and Allam A. L. (1984). *Effect of soil salinity on sugarcane yield of Egypt*.
- Prothero G. (1978). The effect of saline irrigation water on sugarcane ripening. Report of the *Annual Conference of of Hawaiian Sugar Technologists*, 37, 69-71.
- Shoji K. and Sond A. (1965). Research of salinity soil and drainage problems in Haft- Tapeh sugarcane project in Iran, 12th *International Conference of Society of Sugarcane Technology*.
- Thomas J. R., Salinas F. G. and Oerther G. F. (1981). Use of saline water for supplemental irrigation of sugarcane, *Journal of Agronomy*, 73, 1011-1017.
- Wiedenfeld B. (2008). Effects of irrigation water salinity and electrostatic water treatment for sugarcane production, *Journal of Agricultural Water Mngement*, 95, 85-88.
- Yusof S., Shian L. S. and Osman A. (2000). Changes in quality of sugarcane juice upon delayed extraction and storage, *Journal of Food Chemistry*, 68, 395-401.