

() , ()

*

(// : // :)

()

PMWIN

()

MODFLOW

:

(Nilsson,

.1988)

(Prinz and Singh, 2000)

(Beaumont and Kluger, 1973)

(Tsumuro,

babak_ebrahimi@ltr.ui.ac.ir :

*

(Onder and, Yilmaz, 2005;
Senthikumar and, Elango, 2011; Hamidi and Sabbagh
.Yazdi, 2006)

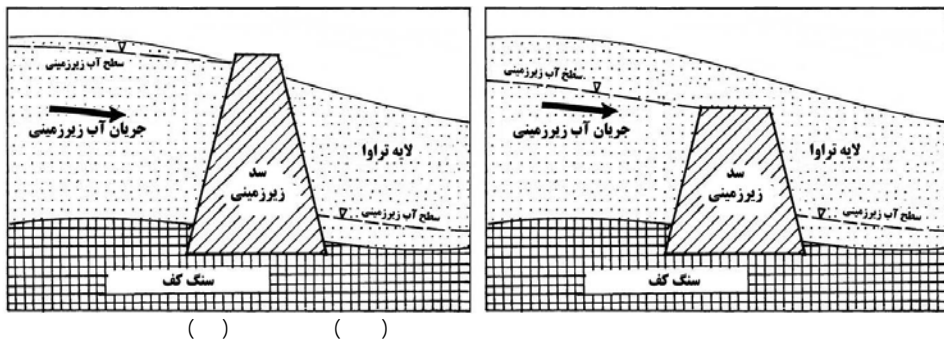
.1999)

(Senthikumar and, Elango, 2001,2004; Gnanasundar
. and, Elango, 2000; Corbet and, Bethke, 1992)

Sugio et al. . Anwar (1983)
(1987)

() . (Nilsson, 1988)

(Hamaguchi et al., 1995; Diettrich,
2002; De Costa & Toshio, 2008)



MODFLOW .

)

(

.(Bear 1979)

$$K_x \frac{\partial^2 h}{\partial x^2} + K_y \frac{\partial^2 h}{\partial y^2} + K_z \frac{\partial^2 h}{\partial z^2} = S_s \frac{\partial h}{\partial t} \quad ()$$

.(McDonald and, Harbaugh, 1998)

Anderson Faust and, Mercer (1980)

and Woessner (1991)

MODFLOW

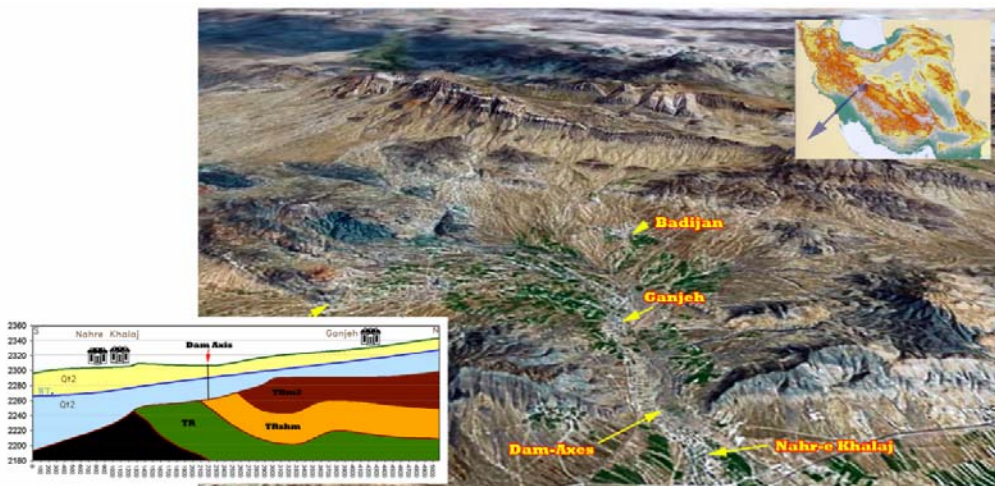
(Chiang

PMWIN

and, Kinzelbach, 1998; Chiang, 2005)

()

UCODE PEST

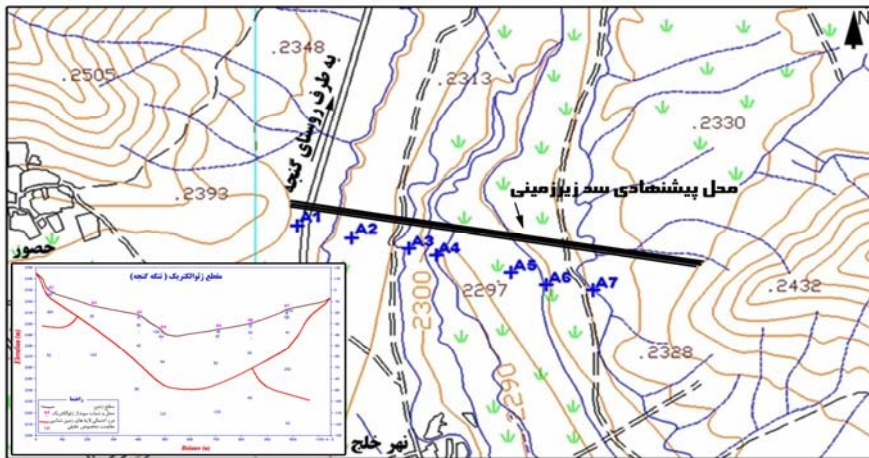


()

()

()

()



%

(/year)

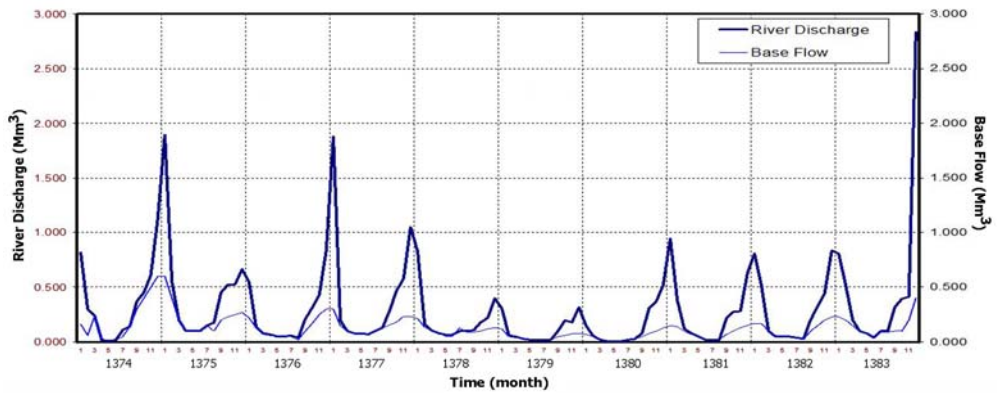
/

(/ Mm³

Zare et (1995) Kordavani

()

(1998) al.



Stedinger et al., 1985; Salas and, Obeyseker, 1982;
 Yarus and, Chambers, 1994; Chatfield, 2003)

()

/

/

()

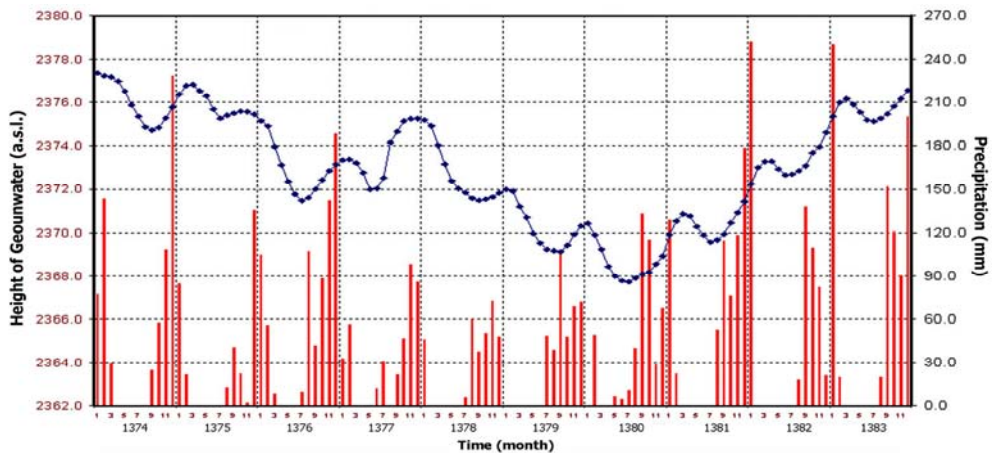
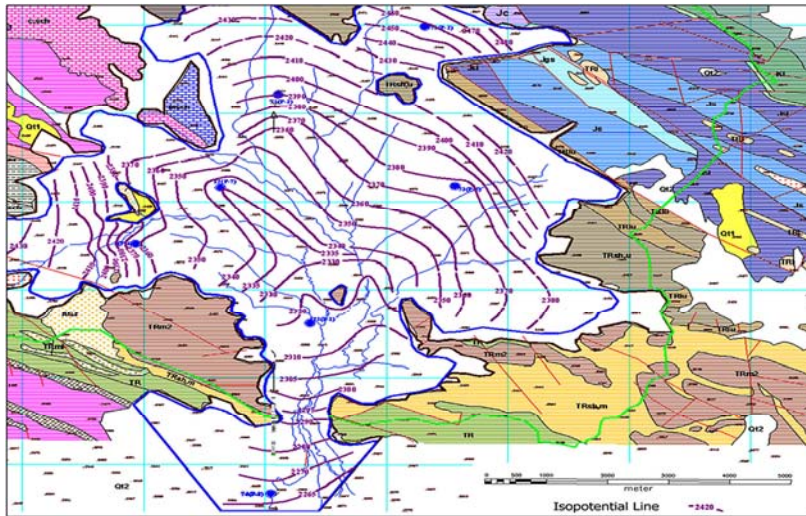
/

ARIMA(100)(110)₁₂ ARIMA(100)(110)₁₂

)

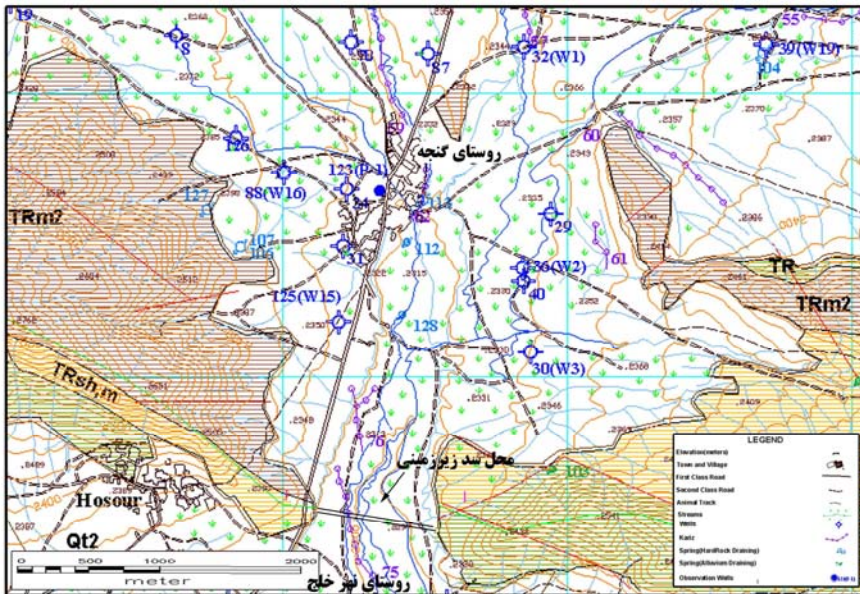
(

(Chow and, Kareliotis, 1970; Yevjevich, 1972; .



()

Archie,) 1942; Kelly, 1977; Niwas and Singhal, 1981; Kosinsky () (and Kelly, 1981; Ahmed et al., 1988



MODFLOW
PMWIN

MODFLOW

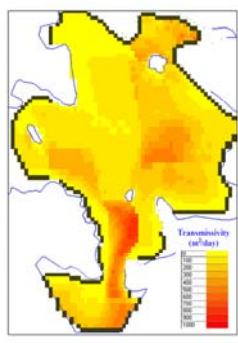
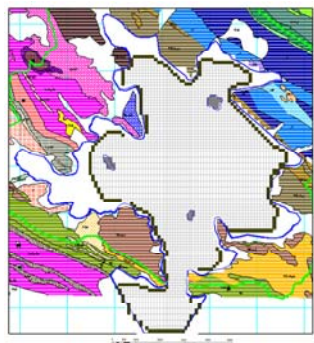
()

PEST

T S

()

(K)



()

()

()

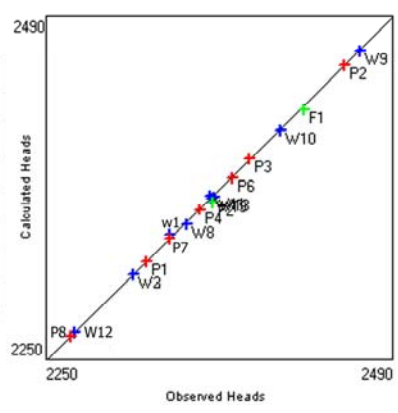
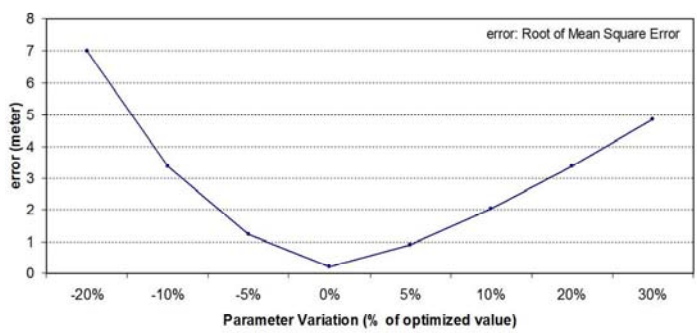
()

PEST

()

)

(



()

()

(K)

()

PEST

)

(

)

(

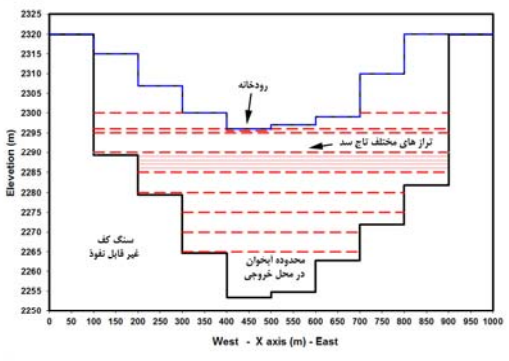
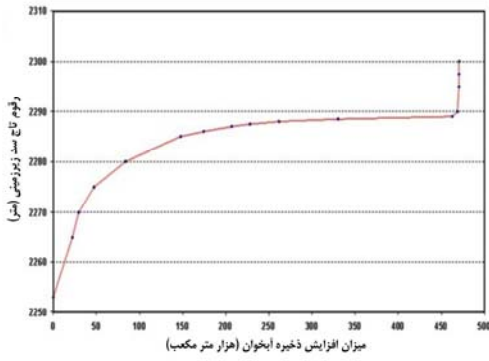
(

)

(

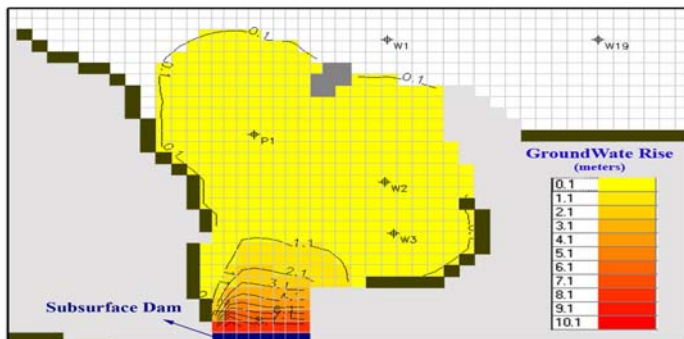
)

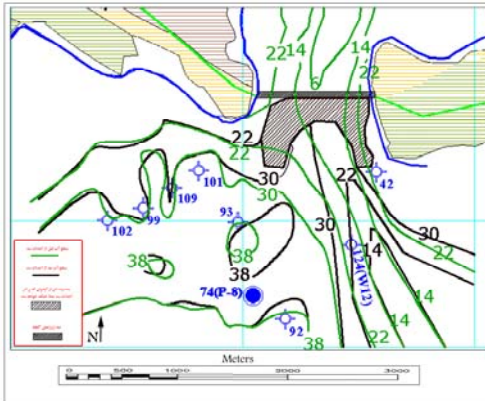
(



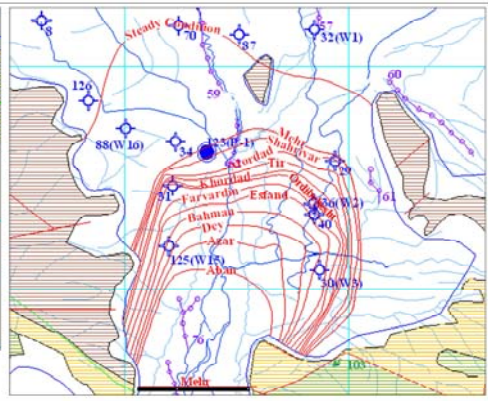
()

()





()



()

()

()

()

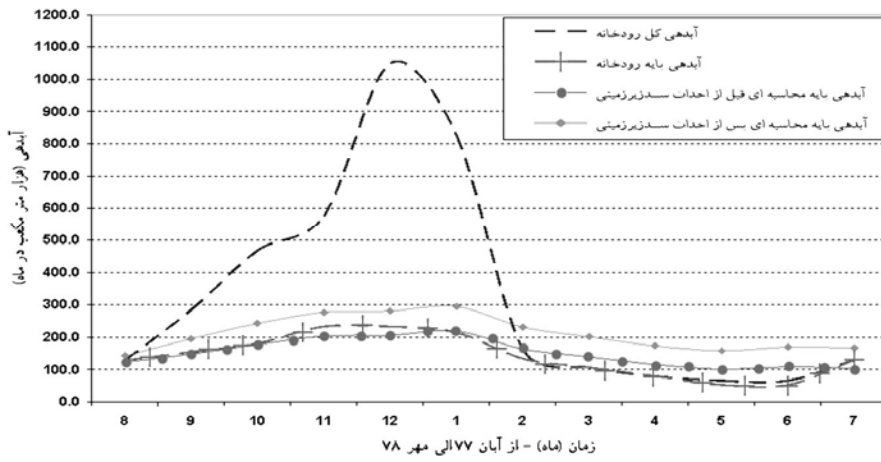
()

()

()

()

()



()

()

(

)

(

)

(

)

)

(

()

()

REFERENCES

- Ahmed, S., G. de Marsily, and Talbot A. (1988). Combined use of hydraulic and electrical properties of an aquifer in ageostatistical estimation of transmissivity. *Ground Water*, 26(1), 78-86.
- Allen, D. M.(2002). Modeling Protocol for successful simulations of flow and heat transport in ATEs systems, *Earth Sciences Program*, Simon Fraser University, Burnaby, B.C. V5A 1S6.
- Anderson, M. P.andWoessner, W. W.(1991).Applied ground water modeling: Simulation of flow and advective transport, 381 pp. Academic Press, Sandiego, CA.
- Anwar, H. O.(1983).The effect of a subsurface barrier on the conservation of fresh water in coastal aquifers. *Water Research*, 17(10),1257–1265
- Archie, G. E. (1942). The electrical resistivity log as an aid in determining some reservoir characteristics, *Am. Inst. Min. Metall.Pet. Eng. Tech. Rep.*, 146, 54-62.
- Bear, J.(1979).*Hydraulic of Groundwater*, McGraw-Hill, N.Y.m 569p.
- Beaumont, R. D. and Kluger, J. W. (1973). Sedimentation in reservoirs as a means of water conservation. *IAHR Congress*, Istanbul, 3-7 September 1973, pp. A28-1-A28-6 (211-216)
- Chatfield, C. (2003). *The Analysis of Time Series: An Introduction* (6th ed.)Chapman & Hall, 352 pp.
- Chiang, W. H. and Kinzelbach, W.(1998). *Processing Modflow: A Simulation System for Modeling Groundwater Flow and Pollution*, User's.Manual, Hamburg-Zurich, 334 pp.
- Chiang, W. H. (2005). *3D-Groundwater Modeling with PMWIN: A Simulation System for Modeling Groundwater Flow and Transport Processes*, 2nd edition, Springer, 398 pp.
- Chow, V. T. and Karelitis, S. J. (1970). Analysis of Stochastic Hydrologic Systems, *Water Resources Research*, 6 (6), 1569–1582
- Corbet, T. F. and Bethke, C. M. (1992). Disequilibrium fluid pressures and groundwater flow in western Canada sedimentarybasin. *Journal of Geophysics Research*, 97(B5), 7203–7217
- De Costa, G. and Toshio, H. (2008). *Groundwater behavior in subsurface area of underground dams. Advances in Water Resources and Hydraulic Engineering*, Vol. II, 789-795, DOI: 10.1007/978-3-540-89465-0_139
- Dietrich, Th., (2002). Dynamic modeling of the ephemeral regimen of subsurface dams in Namibia: a method also for Jordan and other arid countries. *Conference of the RCC Dam Construction in the Middle East, Jordan University of Science and Technology*, Irbid, Jordan.
- Faust, C. R. and Mercer, J. W. (1980). Ground Water Modeling: Numerical Models, *Groundwater*, 18(4), 395-409.
- Gnanasundar, D. and Elango, L. (2000). Groundwater flow modelling of a coastal aquifer near Chennai city, India. *Journal of Indian Water Resource Society*, 20(4),162–171
- Hamaguchi, T., Hasegawa, T.and Murakami,A.(1995). Inverse analysis method for ground water model with moving boundaries, *Theoretical and applied mechanics*, 44, 231-236
- Hamidi, M. and, Sabbagh Yazdi, S. R. (2006). Numerical study on effect subsurface dam on controlling seawater intrusion in costal aquifer, *7th International Congress on Civil Engineering*, Tehran, Iran.
- Kelly, W. E. (1977). Geoelectrical sounding for estimating aquifer hydraulic conductivity.*Ground water*, 15, 420-424.
- Kordavani, P. (1995).*Geohydrology*, Tehran university press, 359 p.
- Kosinsky, W. K. and Kelly, W. E.(1981).Geoelectric sounding for predicting aquifer properties.*Ground Water*. 19 (2), 163-171.
- McDonald, M. G. and Harbaugh, A. W.(1998). MODFLOW, A modular three-dimensional finite difference groundwater flow model, *U. S. Geological Survey*, Open-file report 83-875
- Nilsson A.(1988). *Groundwater dams for small-scale water supply*. IT publication, London.
- Niwas, S. andSinghal, D. C. (1981). Estimation of aquifer transmissivity from Dar Zarrouk parameters in porous media. *Hydrology*, 50, 393-399.
- Onder, H. and Yilmaz, M. (2005). Underground dams: a tool of sustainable development and management of groundwater resources. *European Water 11/12*, EWA, Brussels, pp 35–45
- Prinz, D. and Singh, A. K. (2000). Technological Potential for Improvements of Water. *Harvesting, World Commission on Dams*, Cape Town.
- Salas, J. D. andObeysekera,J. T. B.(1982). ARMA Model identification of hydrologic time series, *Water Resources Research*, 18 (4), 1011–1021
- Senthilkumar, M. and Elango, L. (2001). Numerical simulation of groundwater flow regime in a part of the lower Palar River basin, southern India. In: Elango L, Jayakumar R (eds) *Modelling in Hydrogeology*. Allied, Delhi.
- Senthilkumar, M. and Elango, L. (2004). Three-dimensional mathematical model to simulate groundwater flow in the lower Palar River basin, southern India.*Hydrogeol J* 12(n.2),197–208
- Senthilkumar, M. and Elango, L. (2011). Modelling the impact of a subsurface barrier on groundwater flow in the lower Palar River basin, southern India. *Hydrogeology Journal*, 19 (4), 917-928
- Stedinger, J. R. and Lettenmaier, R. M. Vogel (1985). Multisite ARMA (1,1) and Disaggregation Models for Annual Streamflow Generation, *Water Resources Research*, 21 (4), 497-509
- Sugio S., Nakada, K. and Urish, D. W.(1987).Subsurface seawater intrusion barriers analysis. *Journal of Hydraulic Engineering*, 113, 767–779.
- Todd, D. K.(1980).*Groundwater Hydrology*, John

Wiley and Sons Inc. New York.

Tsumuro, T.(1998). Applying Environment Related Technology: Environmental Measures in the Construction Industry, Business Leaders' Inter-Form for Environment 21, Japan.

Yarus J. M. and Chambers R. L. (1994). Stochastic Modeling and Geostatistics Principles, Methods, and Case Studies, The American Association of Petroleum Geologists, 370 pp.

Yevjevich V. (1972). *Stochastic processes in hydrology*, Water Resources Publications, Fort Collins, Colorado.276 pp.

Zare, M., Raessi A. and Mirbagheri M. (1998). Groundwater Evaporation and its relationship with soil texture and depth of water table, *2nd conference of Iranian Geological Society*, Shiraz, Iran.